

# BLOCK 7 FIVE ACRE PLAT A

LOTS 8,9,10,11,12 & 13 & PART OF LOT 7

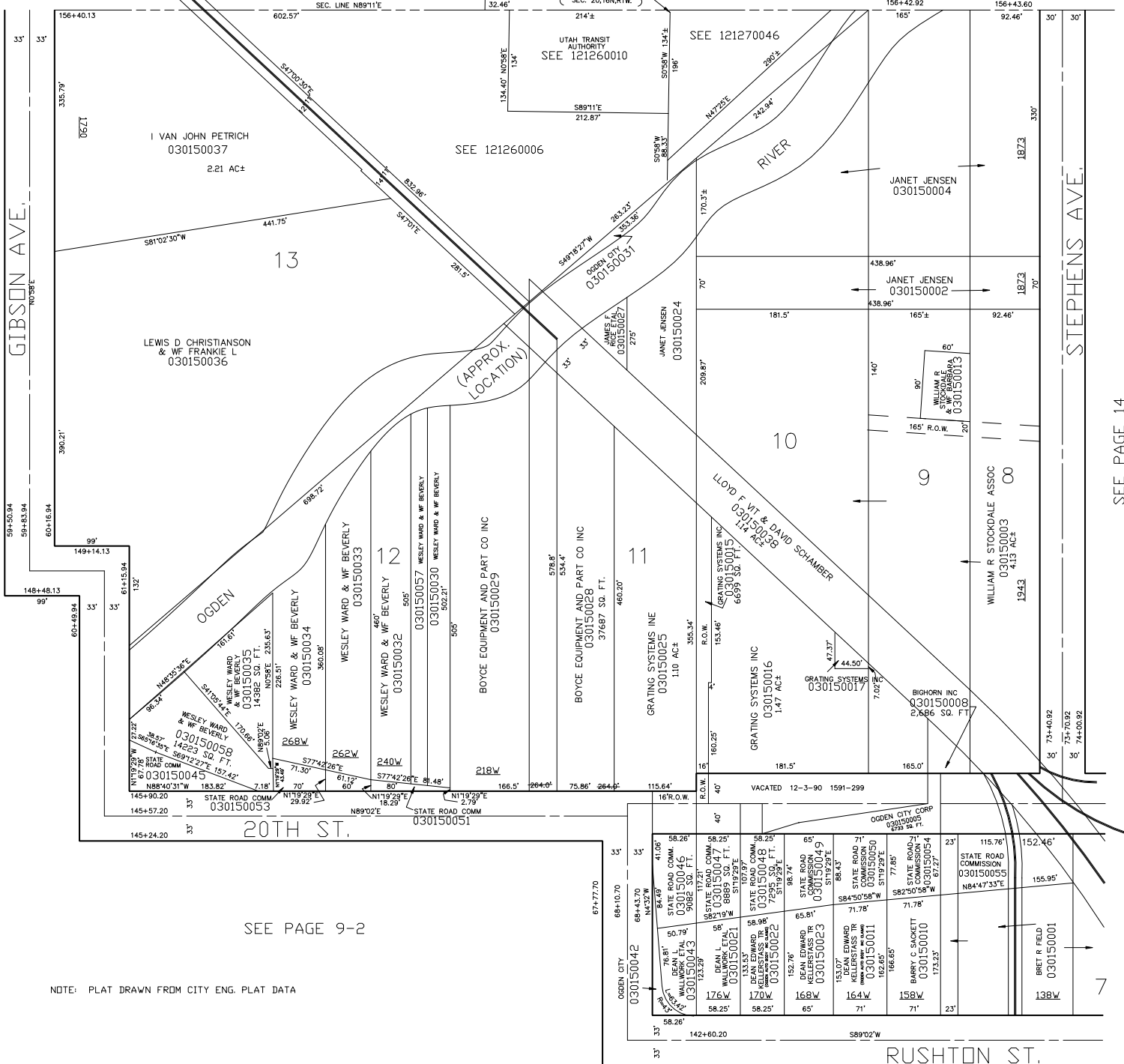
IN OGDEN CITY

SCALE 1" = 100'

TAXING UNIT: 25

SEE BOOK 12 PAGE 126

SEE BOOK 12 PAGE 127



SEE PAGE 9-2

NOTE: PLAT DRAWN FROM CITY ENG. PLAT DATA

SEE PAGE 9-1

MTT 06-96